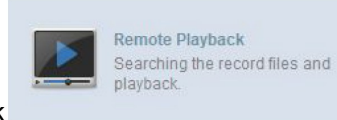


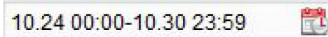
How to Playback Video from CMS software

1. First, log into the CMS software. Then you will see the Menu pop up and should

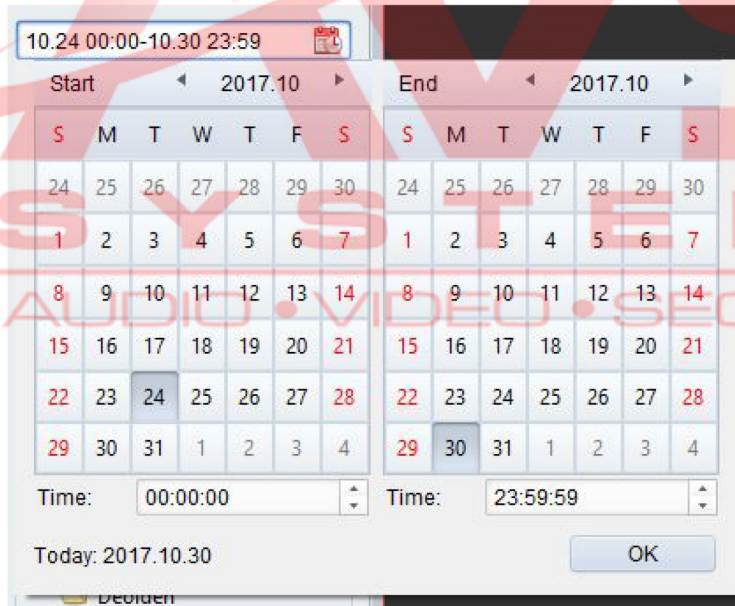


see the Remote Playback icon . Click on the icon and four windows should pop up.

2. In the top left corner, you should see a bar with a mini calendar icon.



Click on the calendar icon and you should see two calendars pop up. Keep in mind (left side is the start date and right side is the end date.) You may only view the dates with the red tab on them. The time is located on the bottom of the calendar (Military time). Once you have your specific date for both left, right calendars and exact time press ok.




3. Next you should see your DVR folder name on the left hand side (it should look something like this.





HD Series DVR/NVR

4. Hit the  sign by your DVR folder name, this will drop down all the individual cameras assigned to that specific DVR.

5. Next you're going to drag and drop the individual cameras that you want to view



(Keep in mind depending on your router speeds, the more cameras you put for playback the slower the software might run.)

6. Only that individual camera highlighted will playback in that specific time. To have all cameras synchronized on the bottom left corner you should see the



(asynchronous & synchronous box) highlight the synchronous button by clicking on it. From there all cameras should be synchronized and going at the same time.

