

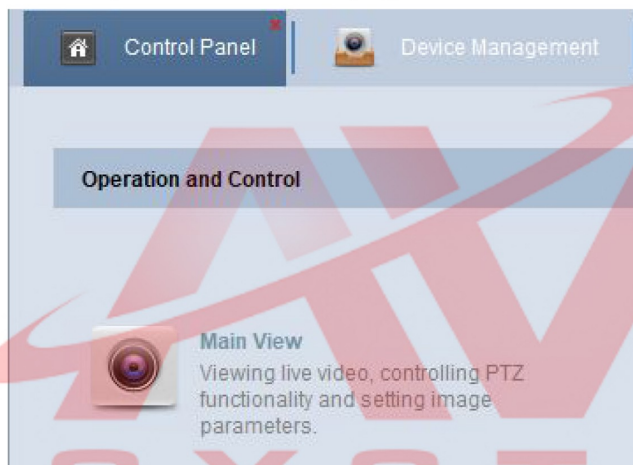
## Live playback CMS Client

### Starting Live View in Default View Mode

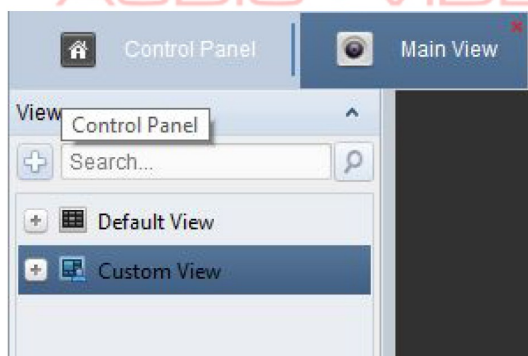
**Purpose:** The video of the added cameras can be displayed in different view modes. 4 frequently-used default view modes are selectable: 1-Screen, 4-Screen, 9-Screen and 16-Screen.

### **Steps:**

1. Open the Main View page from the Control Panel.



2. In the View panel, click the  icon to expand the default view list.



3. Click to select the default view mode and the video of the added cameras will be displayed in a sequence in the selected view.










### Starting Live View in Custom View Mode

**Purpose:** The view mode can also be customized for the video live view.

**Steps:**

1. Open the Main View page.
2. In the View panel, click the icon  to expand the custom view list. If there is custom view available, you can click to start live view of the custom view.
3. Click  to create a new view.
4. Input the view name and click **Add**. The new view is of 4-Screen mode by default.
5. Optionally, click the  icon in live view toolbar and select the screen layout mode for the new view.
6. Click-and-drag the camera/group to the display window, or double-click the camera/group name in custom view mode to start the live view.
7. Click the  icon to save the new view. You can also click  to save the view as another custom view.